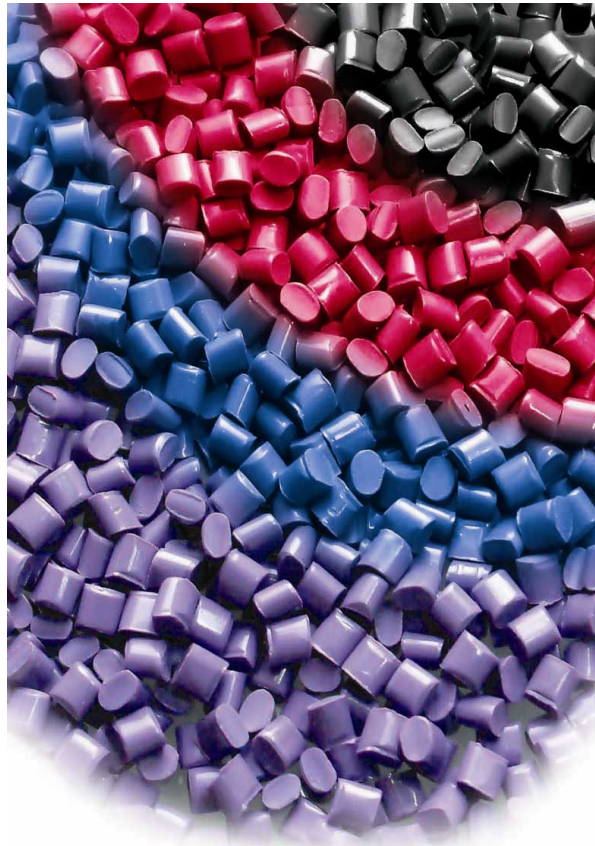


# COMPANY PROFILE



Cert. No. QAIC/SG/061



Reg No : 220488  
ISO 14001:2004 Certified

# COMPANY PROFILE

---



<b>Company Name</b>	: <b>Metro Wealth Polymer Sdn Bhd</b>
<b>Date Established</b>	: 20 <sup>th</sup> March 2003
<b>Office / Factory</b>	: Lot 670, 14 ½ Miles Jalan Sungei Tiram 81800 Ulu Tiram, Johor Malaysia
<b>Tel No</b>	: 607-861 0111 / 607-861 2288
<b>Fax No</b>	: 607-861 0333
<b>Email Address</b>	: <a href="mailto:metro.wp@tm.net.my">metro.wp@tm.net.my</a>
<b>Company Website</b>	: <a href="http://www.metrowealthpolymer.com.my">www.metrowealthpolymer.com.my</a>
<b>Authorized Capital</b>	: RM10,000,000.00
<b>Paid-up Capital</b>	: RM5,000,000.00
<b>Main Banker</b>	: Malayan Banking Berhad
<b>Registrar / Secretariat</b>	: C&A Industrial Consultants Sdn Bhd (245220-P) 2F Jalan Giam, Taman Majidee (Off Jalan Tebrau) 80250 Johor Bahru, Johor, Malaysia

# ACCREDITATION & AWARDS

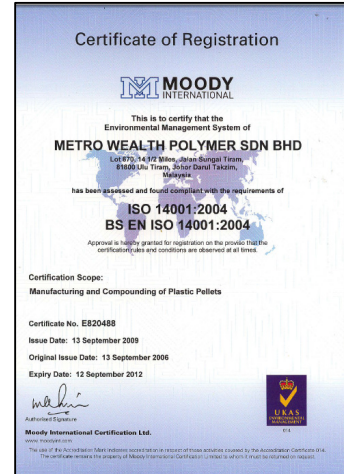


## International Standard EN ISO 9001:2008 Quality Management System

- Date of Registration on June 2004

## International Standard BS EN ISO 14001:2004 Environmental Management System

- Date of Registration on Sept 2006



## Golden Bull Awards 2006

- Awarded Date: August 2006

## Green Procurement Agreement

- Agreement Date: 1<sup>st</sup> October 2006
- Approved and issued by, Sharp-Roxy Electronics Corporation (M) Sdn Bhd.



## Sony Green Partner Certificate

- Certification Date: 1<sup>st</sup> April 2006
- Approved and issued by, Procurement Center, Sony Corporation
- **Renewal Certificate received on 29<sup>th</sup> April 2010**
- **Certificate No : PRC-AP8871**

# WHY METRO WEALTH POLYMER?

---

*Our products provide . . .*

## *Quality Policy*

*To achieve customer satisfaction by continuously improving the Quality Management System.*

## *Savings*

*A significant cost advantage over virgin resin without deterioration of product quality*

## *Result Consistency*

*Consistent quality specifications, color, and etc*

## *Quality*

*Ongoing inspections, sampling, and well-equipped laboratory make sure that every product delivers or exceeds the performance that is expected.*

## *Delivery*

*Whatever means we deliver, we always deliver quality.*

## *Full-Service*

*A team of service-oriented professionals provides fast response of assistance to customer.  
Offering more to customers than just selling resin!!*

**OUR MOTTO....**

## **OUR SOLUTION, YOUR SUCCESS!**

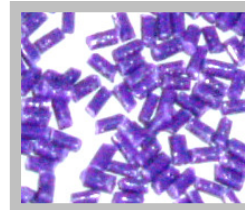
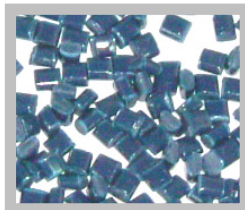
We recognize that you, the customer, are our most important asset. We desire to create a long-term and trusting relationship with our customers. Everyday, we strive to exceed your highest expectations in terms of price, value and customer service.

# MAIN ACTIVITIES

---

We provide the following:-

- ✚ Compounding and coloring of most engineering plastics e.g. HIPS, ABS, PC, PC/ABS, POM, ABS GF, PC GF, PP GF and etc.



- ✚ Compounding of flame retardant, glass fibre material, UV material and etc.



# PRODUCTION FACILITIES

---

## Production Capacities

19 production lines for compounding /coloring

2 sampling lines

Our machine extruder ranges from 100mm to 150mm.

Daily output : Average 60 Metric Ton

Monthly Output : Average 1800 Metric Ton

## OUR VISION ... ..

To be the industry leader of High-Tech Reprocessed engineering plastics in ASEAN by continuously delivering superior value to customers, anticipating their expectations, through our advanced technology.

*METRO WEALTH POLYMER SDN BHD*

# LABORATORY FACILITIES

---

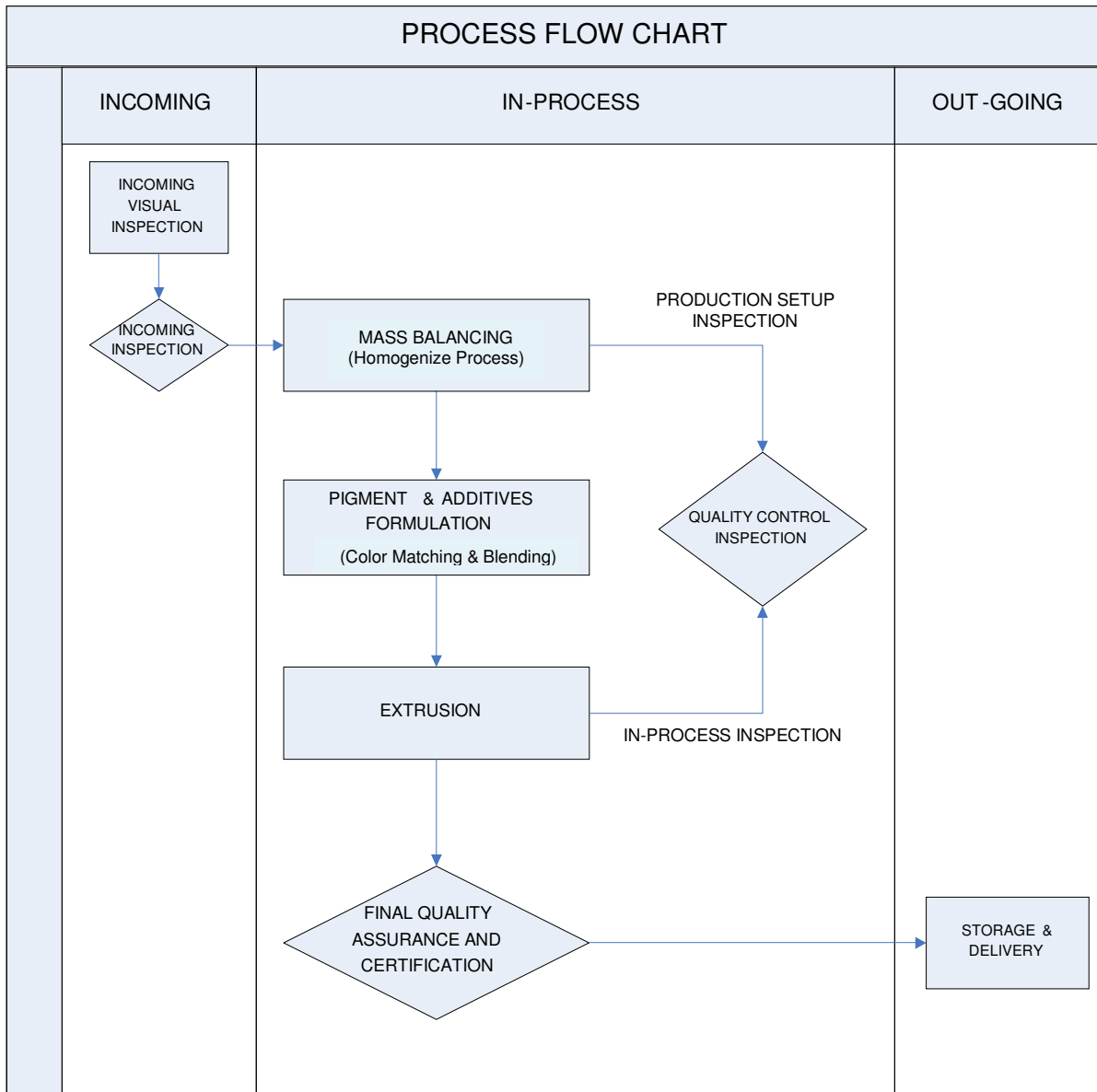
We have the following facilities in our QC lab:-

- 1) **Advanced Universal Pendulum Impact System**
  - ✚ To perform Izod Test, to determine the impact resistance of plastic
- 2) **Auto Cycle Test Sample Notching Cutter**
  - ✚ To produce notch profile into plastic test sample material.
- 3) **Melt Flow Indexer**
  - ✚ To determine the rate of extrusion of molten resin.
- 4) **Chamber Furnace**
  - ✚ To burn plastic with glass fibre content at high temperature, in order to determine percentage glass fibre in the plastic.
- 5) **X-Ray Fluorescence Analyzer**
  - ✚ To rapid screening for Environmental Restricted Hazardous Substances.
- 6) **Plastic Injection molding Machine**
  - ✚ To produce plastic injection into various physical properties test pieces.
- 7) **UL94 Equivalent Frame retardant test Equipment**
  - ✚ To perform flammability test.
- 8) **Servo control computer System Universal testing Machine**
  - ✚ To perform tensile and flexural strength test.
- 9) **Oven**
  - ✚ To check heat resistance.
- 10) **Density determination**
  - ✚ To determine density of plastic resin
- 11) **QC Compression Machine**
  - ✚ Color and black dot checking
- 12) **Moisture Analyzer**
  - ✚ Analyze the moisture content of the material.
- 13) **Sphere Spectrophotometer**
  - ✚ To check color deviation
- 14) **Computer HDT/Vicat Tester**
- 15) **Color Box**



(Test Pieces for Various Physical Properties Test )

# QUALITY PLAN FLOW CHART



## Our Service ... ..

We have a team of dedicated and enthusiastic technical people to assist our customer to achieve high quality product at a competitive price.

# UL RECOGNIZED COMPONENT MARK

---



is the United States' original product safety standards developer and certification organization. And, UL's Marks for components and end-products are the most credible certification marks.

To provide our valued customer the confidence and quality product, Metro Wealth Polymer always look forward to improve the quality control performance and management. Meanwhile, we have joined the program and apply for the UL Recognized Component Mark.



## Metro Wealth Under-Register File No: ( E306925 )

- ✓ **Mayron PC MW 3820 U**
  - Polycarbonate 20% Glass Reinforced - HB Grade
- ✓ **Mayron PC MW 32020GF U**
  - Polycarbonate 20% Glass Reinforced – V2 Grade
- ✓ **Mayron PC MW 3620 U**
  - Polycarbonate 20% Glass Reinforced – VO Grade
- ✓ **Mayron PC MW 333 U**
  - Polycarbonate - HB Grade
- ✓ **Mayloy PC/ABS MW 500 U**
  - Polycarbonate/Acrylonitrile-Butadiene-Styrene - VO Grade
- ✓ **Mayrene PS MW 222 U**
  - Polystyrene - HB Grade
- ✓ **Mayrene PS MW 220 U**
  - Polystyrene – V2 Grade
- ✓ **Mayrene PS MW 210 U**
  - Polystyrene – V1 Grade
- ✓ **Mayrene PS MW 200 U**
  - Polystyrene - VO Grade
- ✓ **Mayrex ABS MW 111 U**
  - Acrylonitrile-Butadiene-Styrene - HB Grade
- ✓ **Mayrex ABS MW 1020 U**
  - Acrylonitrile-Butadiene-Styrene 20% Glass Reinforced - HB Grade
- ✓ **Mayryl PPO MW 820 U**
  - Polyphenol Oxidase 20% Glass Reinforced - HB Grade



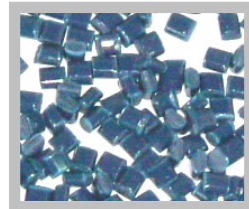
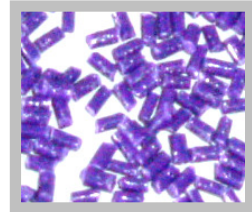
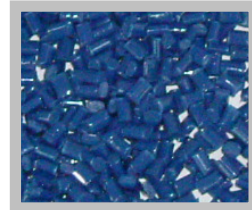
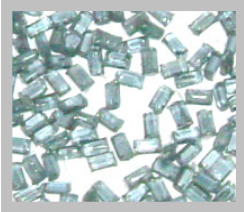
# 2011 PLAN

---

## Production Capacities

To fulfill our customer needs, Metro Wealth Polymer will increase the production capacities as:-

- Daily Output : Average 85 Metric Tons
- Monthly Output : Average 2500 Metric Tons



### Our Mission ... ..

To satisfy the needs of our customer and facilitate improvement in their profitability by offering a comprehensive range of engineering thermoplastic compounds with the unique balance of Quality, Value, and Services while believing it was possible to help the plastic industry become environmentally responsible.

# MAJOR CUSTOMER

---

-  **SONY**
-  **SHARP**
-  **SAMSUNG**
-  **PANASONIC**
-  **SANYO**
-  **HEWLETT PACKARD**

# BUSINESS PARTNER

---

- **Toyota Tsusho Corporation (International)**



**METRO WEALTH POLYMER SDN. BHD. (609517-U)**

Lot 670, 14 ½ Miles, Jalan Sungei Tiram

81800 Ulu Tiram, Johor, Malaysia.

Tel: 607-861 0111 / 607-861 2288 中文专线: 607-861 8859

Fax: 607-861 0333

Email: [metro.wp@tm.net.my](mailto:metro.wp@tm.net.my)

Website : <http://www.metrowealthpolymer.com.my>

Singapore Office : 18 Boon Lay Way #05-102 TradeHub 21 Singapore 609966

Tel : 65-6515 9989